

Annual Report

Social Responsibility



2010

shorted version



If we were asked to sum up the 2010 business year for Séché Environnement in just a few words, we would say that we enjoyed strong growth, penetrated new markets and were buoyed by the positive effects of France's economic recovery.

Our investment policy with a view to promoting waste recycling and recovery is in line with this scenario. We have been a pioneer in recycling biogas to generate green electricity and we continually build on our expertise by developing new industrial applications.

For example, we developed a co-generation solution using fuel derived from recycled wood on behalf of a partner in the agricultural sector who is the European leader in its field. We are about to launch a major waste-derived alternative fuel production program.

These achievements have enhanced our reputation as a pioneer in the future business of converting waste into resources.

Séché Environnement has always pursued development in a way that promotes civic responsibility. Environmental management, continuous development, traceability, transparency, listening to stakeholders, protecting biodiversity and industrial ecology are part of our core principles and ethics.

Shared by all our employees, our values in the area of corporate social responsibility are spotlighted in the annual report on social responsibility which, as every year, summarizes the new initiatives deployed within the Group.

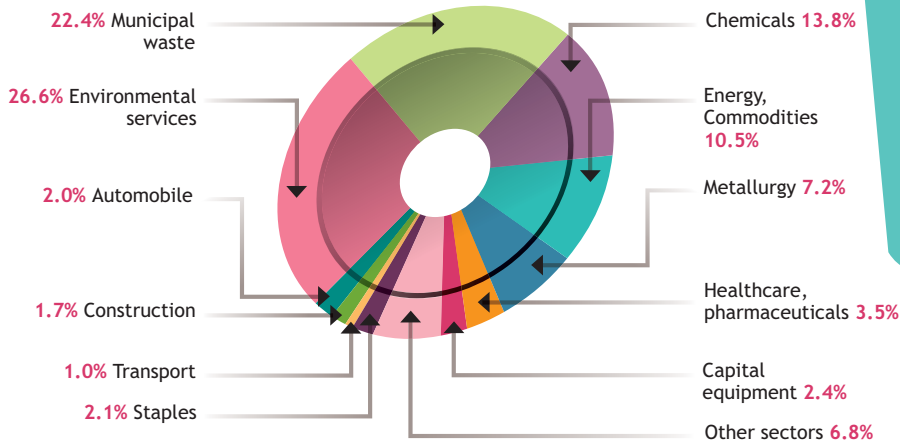
I invite you to learn more about our values by visiting our web site.



**Joël Séché,
Chairman & CEO**

Focus on the economy

2010 revenue breakdown by waste-producing sector (in %)



In 2010, all S  ch   Environnement's business lines returned to a strong growth track, scored a number of major commercial successes and confirmed the company's position as a highly innovative actor on the environmental market serving local governments and industry.

In 2011, S  ch   Environnement plans to pursue growth drawing on the strength of its regulated markets, the development of its recycling business and its business creativity in offering its local government and industrial customers more high value-added environmental and sustainable development services.

2010 sales :
+10% to €402.1 M

Hazardous waste +6.6%
solidity of regulated markets and the momentum in industrial recovery

Non-hazardous waste +17.3%
promising markets and the contribution of the Strasbourg contract

Current operating results are up 5.5% and now account for 16.6% of sales

Net results of consolidated companies stands at 11.5% of sales

Deployment of technologies



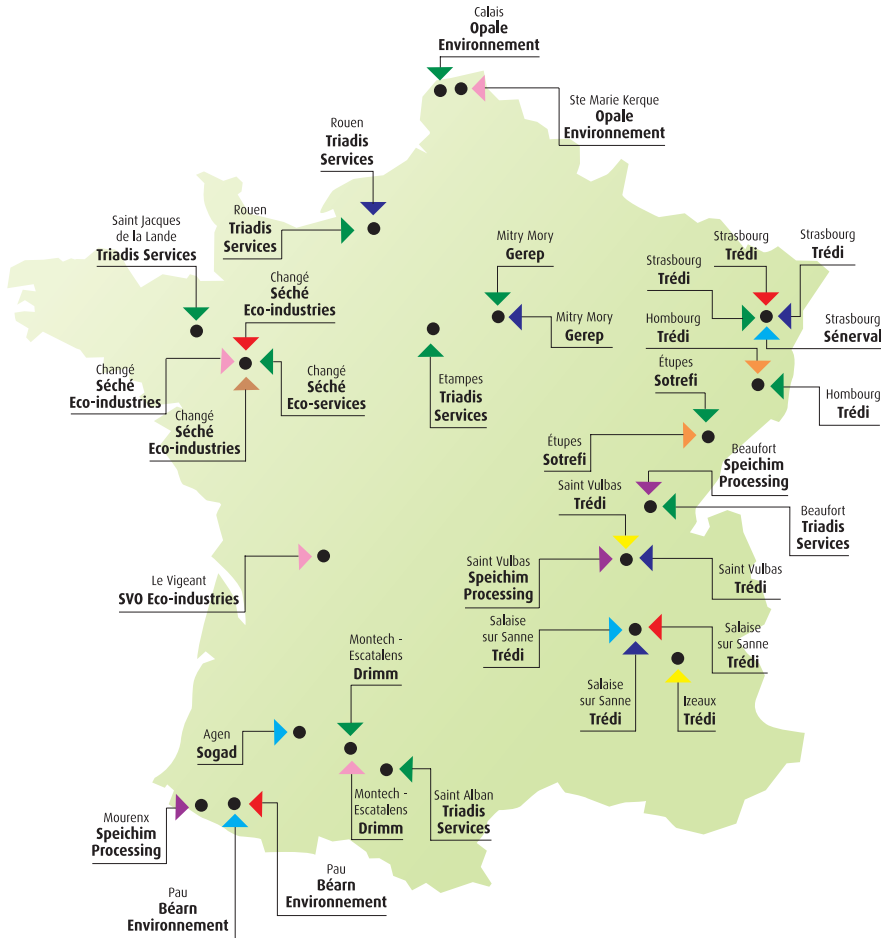
Delegated waste management (global offer)

A global offer, personalized partnership, marshalling proven and integrated technologies designed to control risk and deliver maximal environmental performance.

Sludge drying (global offer)

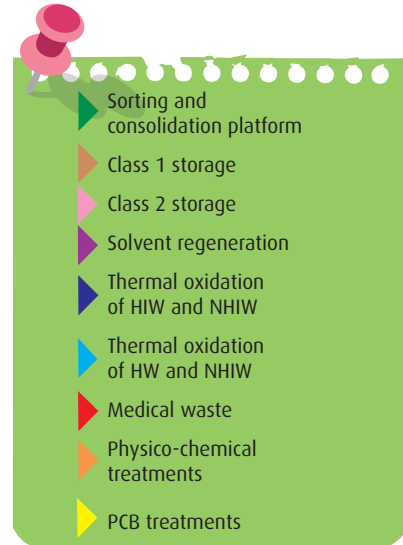


Group locations

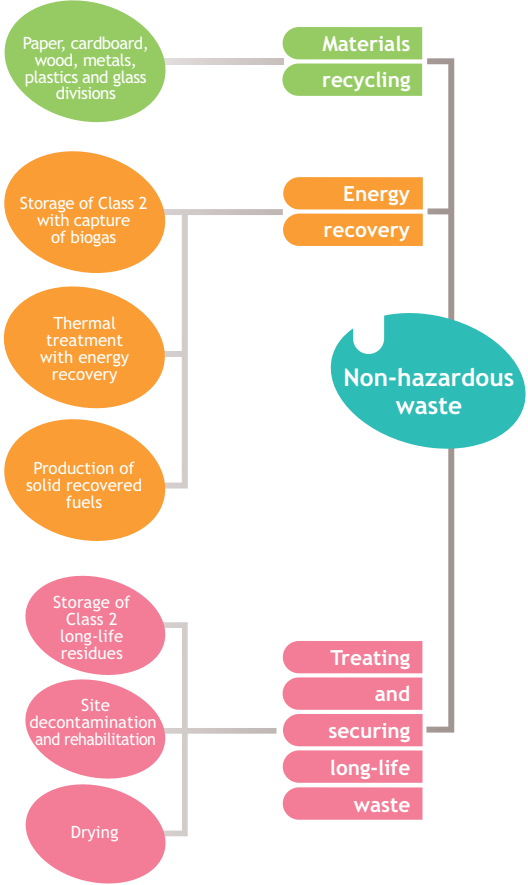


Offshore operations

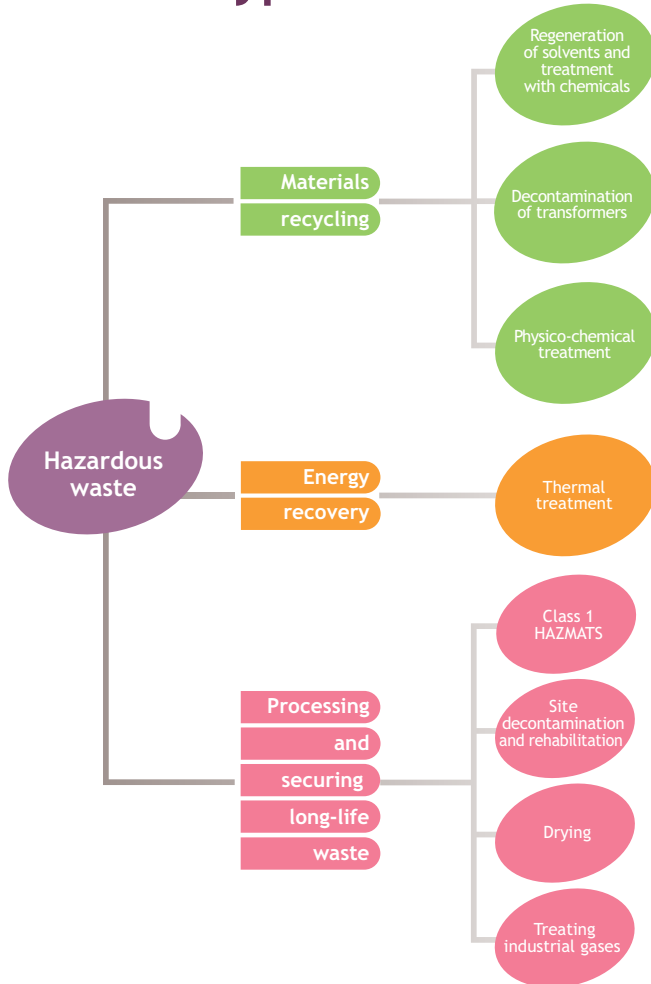
These operations are carried out by extending our domestic businesses around the world concentrated on site reclamation, the treatment of PCBs and other dangerous waste such as Persistent Organic Pollutants (POPs).



Treatments adapted...



...to all types of waste



Focus on society

Absenteeism

- Total absenteeism 6.7%**
 o/w maternity 0.9%
 (if maternity is excluded, 5.8%)
- For health reasons 4.9%**
 o/w workplace accidents 0.5%
 o/w illness 4.4%

Job stability

- Per cent open-ended contracts 95.1%**
- Use of overtime 1.2%**
- Temporary (compared to full-time staff) 10.8%**

Personnel turnover

(departures)

- Total 8.2%**
- o/w open-ended contracts in force: 2.9%**
- Other departures: 5.0%**

Women

in the workforce 24.7%

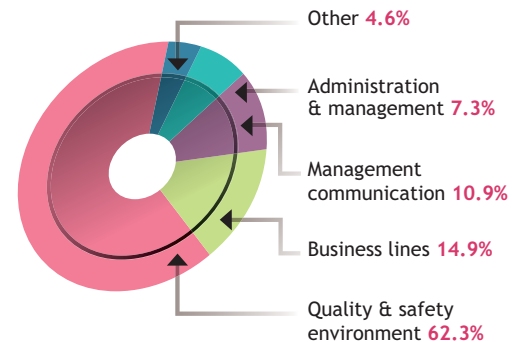
Social macro-indicators



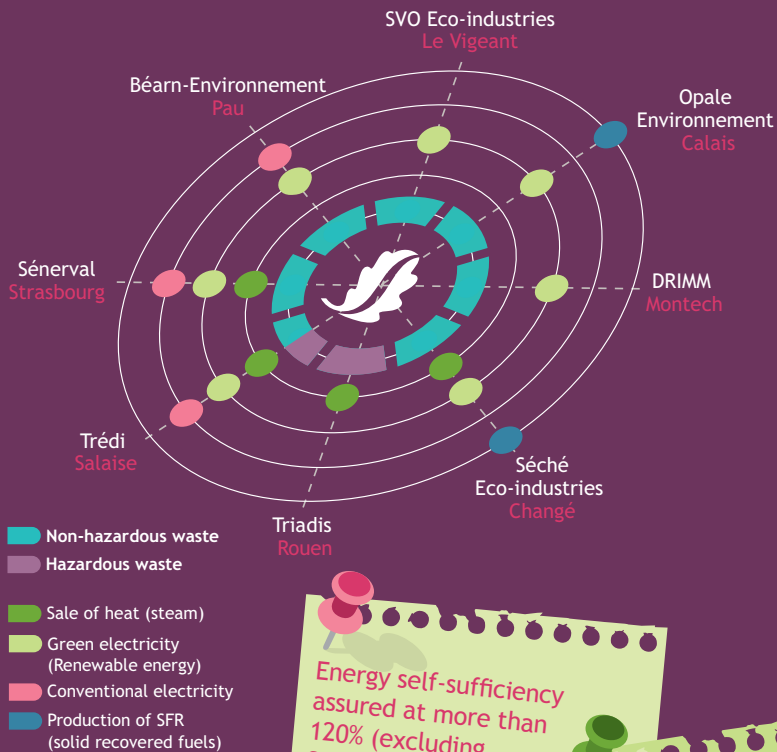
1582 employees
by year-end 2010

1720 trainees

Training in 2010



Focus on energy



Energy self-sufficiency assured at more than 120% (excluding Sénerval)

Electrical power generation corresponding to the consumption of 250,000 inhabitants (excluding Sénerval)

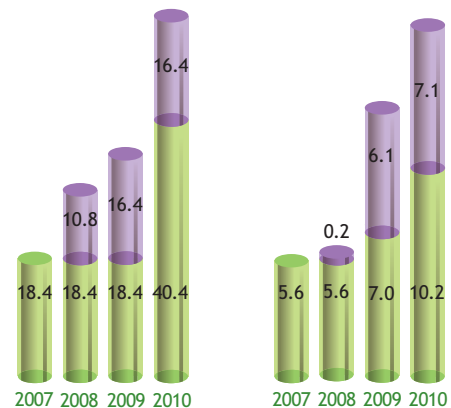
Going beyond self-sufficiency, net energy production from waste

Non-hazardous waste storage facilities generate biogas produced by the fermentation of stored waste (approximately 38% methane, renewable energy, produced by biological breakdown of organic matter).

The Group also generates electric power from the incineration of household and industrial waste. Additionally, it sells co-generated steam.

Increase in installed capacity (in MW)

Growth in energy sales (in millions of €)



Storage (Purple) Incineration (Green)
Sénerval 2010 consolidated over 6 months

Focus on the environment

Séché Environnement and biodiversity, a long history

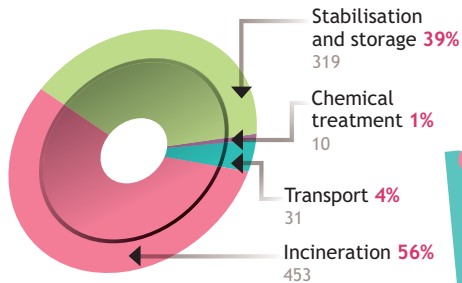
- Integration into corporate policy
- Services rendered by ecosystems
- Expertise supported by research

The attention focused on ecosystems

- Positive initiatives on atmospheric emissions
- Protection of air quality
- Preservation of aquatic environments

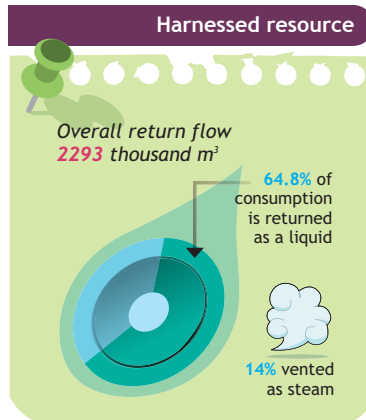
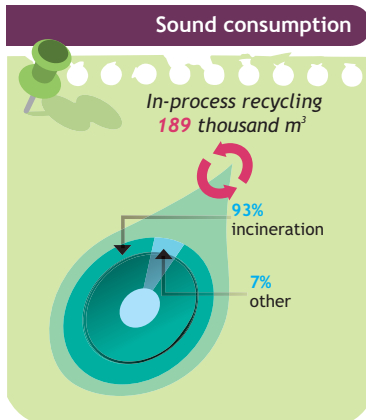
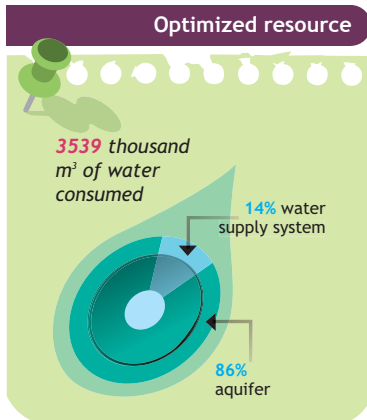
Greenhouse gases by emission source in 2010

818.7 kteq CO₂

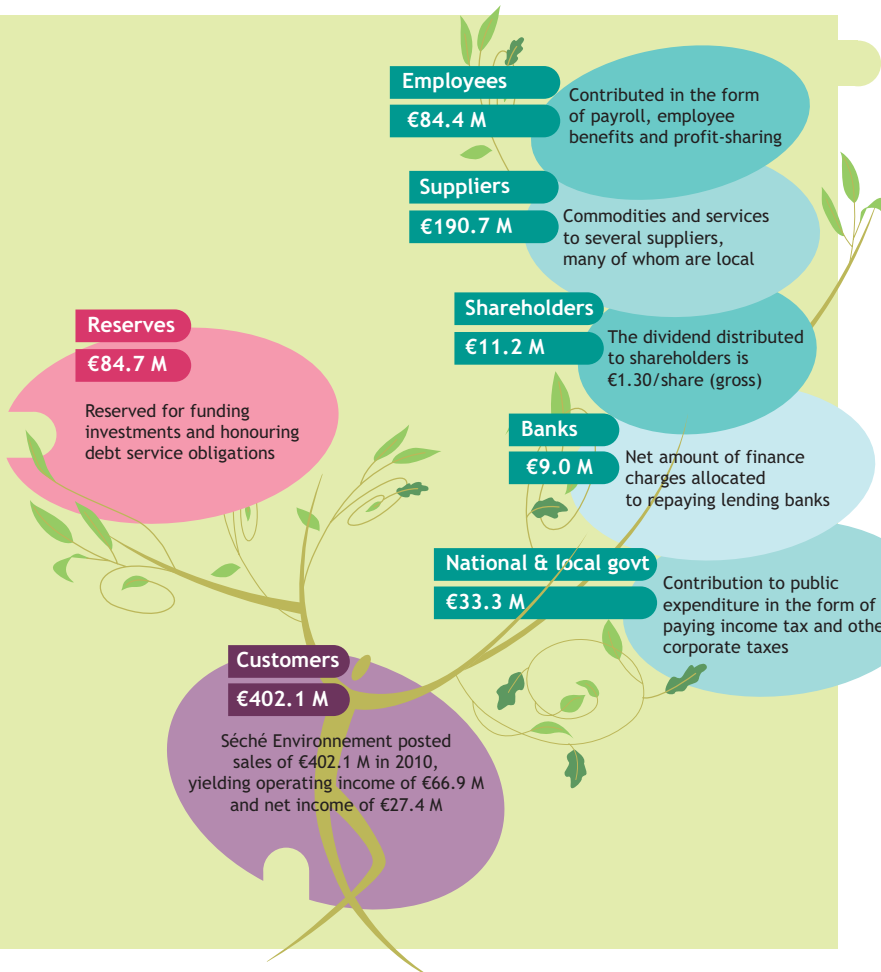


111 kteq CO₂ avoided thanks to energy recovered

7472 kteq CO₂ avoided by elimination of certain processes



Focus on society



A strategy focused on building expertise

The Group's strong culture of innovation enables it to improve performance and to meet the major challenges facing the environment.

Corporate sponsorship of the Jardin des Plantes greenhouses



Anticipate customer needs
 Improve performance
 Develop the technologies of tomorrow
 Develop the technologies of tomorrow
 Improve performance
 Anticipate customer needs
 Develop the technologies of tomorrow
 Anticipate customer needs
 Develop the technologies of tomorrow



Les Hêtres - BP 20 - F 53811 Changé
Phone: +33 (2) 43 59 60 00 - Fax : +33 (2) 43 59 60 01

Tour Maine Montparnasse - BP 125
33 avenue du Maine - F 75755 Paris Cedex 15
Phone: +33 (1) 53 21 53 53 - Fax : +33 (1) 53 21 53 54
www.groupe-seche.com
Contact : dd@groupe-seche.com

**View the full 2010 Annual Report on Social
Responsibility at:
www.groupe-seche.com/rapportRSE2010/**